

Slide  
1

# Time to Event Models Practical Implementation

Nick Holford  
Dept Pharmacology & Clinical Pharmacology  
University of Auckland, New Zealand

©NHG Holford 2021, all rights reserved.

Slide  
2

## Encoding Single Events Interval Starts with DV=3

ID	TIME	DV	MDV (NONMEM)	Comment
1	0	.	1	Start observing
1	50	1	0	Exact Time Event
2	0	.	1	Start observing
2	100	0	0	Censored Event
3	0	.	1	Start observing
3	55	3	1	Start Event Interval
3	70	2	0	End Event Interval

©NHG Holford 2021, all rights reserved.

A record at time=0 is needed to define when the hazard integration starts.  
Exact event has DV=1, Interval Censored event has DV=2  
A DV value of 3 is used to signal the start of an interval containing an event.

Slide  
3

## Single Event Time Varying Hazard (CP) Interval starts with DV=3

```

$ESTIM MAXEVAL=9990 METHOD=COND          $DES
NSIG=3 SIGL=9                            DCP=A(1)/V
LAPLACE LIKE                             DADT(1)=CL*DCP
                                           DADT(2)=BASHAZ*EXP(BETACP*DCP)

$THETA
10 FIX ; CL
100 FIX ; V
(0,0.01) ; BASE
0.1 ; BETACP

$OMEGA
0.1 FIX ; PPV_CL
0.1 FIX ; PPV_V

$$SUBR ADVAN=6 TOL=9
$MODEL
COMP=(CENTRAL)
COMP=(CUMHAZ)

$PK
IF (NEWIND.LE.1) THEN
  ; for interval censoring
  SURLAST=1
ENDIF
CL=THETA(1) *EXP(ETA(1))
V=THETA(2) *EXP(ETA(2))
BASHAZ=THETA(3)
BETACP=THETA(4)

$DES
DCP=A(1)/V
DADT(1)=CL*DCP
DADT(2)=BASHAZ*EXP(BETACP*DCP)

$ERROR
CP=A(1)/V
HAZ= BASHAZ*EXP(BETACP*CP)
CUMHAZ=A(2)
SUR=EXP(-CUMHAZ)

; Estimation Code
IF (DV.EQ.0) THEN ; Censored event
  Y=SUR ; Likelihood is the survivor function
ENDIF
IF (DV.EQ.1) THEN ; Exact Time event
  Y=SUR*HAZ ; likelihood of event in interval
ENDIF
IF (DV.EQ.2) THEN ; Interval Censored event
  Y=SURLAST-SUR ; likelihood of event in interval
ENDIF
IF (DV.EQ.3) THEN ; start of new event interval
  SURLAST=SUR ; survivor function at start of new
  interval
ELSE ; save recursive random variable
  SURLAST=SURLAST ; survivor function at end of
  previous interval
ENDIF

```

©NHG Holford 2021, all rights reserved.

Estimation of the parameters of any hazard model can be done using this kind of code. It uses ADVAN6 to integrate the hazard and obtain the cumulative hazard. This can be used with the hazard at the time of the event to calculate the likelihood of right censored, exact time and interval censored events. Random effects on hazard model parameters (e.g. BASHAZ and BETACP) are not estimable with single events.

Slide 4

## Joint Model Data Interval start uses DV=3

ID	TIME	TRT	DVID	DV	MDV	Comment
1	0	0	.	.	1	Start observing
1	20	0	1	67.4	0	Biomarker
1	30	0	1	43.2	0	Biomarker
1	50	0	2	1	0	Exact Time Event
2	0	1	.	.	1	Start observing
2	20	1	1	50.2	0	Biomarker
2	30	1	2	3	1	Start event interval
2	30	1	1	13.5	0	Biomarker
2	50	1	2	2	0	Interval Censored Event

©NHG Hofford 2021, all rights reserved.

The TRT data item indicates if the subject is receiving active treatment (TRT=1) or not (TRT=0). DVID is used to distinguish between continuous value biomarker observations (e.g. DVID=1 for drug concentration) and event observations (e.g. DVID=2). Start of an event interval is marked by DV=3 and DVID=2. Exact event has DV=1, Interval Censored event has DV=2

Slide 5

## Disease Progress and Time Varying Hazard Interval start uses DV=3

```

$INPUT ID TRT DVID TIME DV MDV
$ESTIM MAX=9990 NSIG=3 SIGL=9
METHOD=CONDITIONAL
LAPLACE
$SUBR ADVAN=6 TOL=9

$MODEL
COMP=(CUMHAZ)
$PK
IF (NEWIND.LE.1) THEN ; Initialize
  SURLAST=1
  CUMLAST=0
ENDIF
; Hazard
BASHAZ = THETA(1) ; Baseline hazard
BETADP = THETA(2) ; Disease progress effect
; Symptomatic treatment effect
EFFECT = TRT*THETA(3)
; Disease Progress
INTRI = (THETA(4) + EFFECT)*EXP(ETA(1))
SLOPI = THETA(5)*EXP(ETA(2))
$DES
DPRG = INTRI + SLOPI*T
DADT(1) = BASHAZ*EXP(BETADP*DPRG) ; h(t)

$ERROR
CUMHAZ=A(1) ; Cumulative hazard
SUR=EXP(-CUMHAZ)
DISPRG=INTRI + SLOPI*TIME
;
IF (DVID.EQ.1) THEN ; disease progress
  F_FLAG = 0 ; Continuous
  Y = DISPRG + ERR(1) ; Disease Progress
ENDIF
;
IF (DVID.EQ.2.AND.DV.EQ.0) THEN ; right censored
  F_FLAG = 1 ; Likelihood
  Y = EXP(-CUMHAZ)
ENDIF
;
IF (DVID.EQ.2.AND.DV.EQ.1) THEN ; exact time
  F_FLAG = 1 ; Likelihood
  HAZARD = BASHAZ*EXP(BETADP*DISPRG)
  Y = SUR*HAZARD
ENDIF
;
IF (DVID.EQ.2.AND.DV.EQ.2) THEN ; interval censored
  F_FLAG = 1 ; Likelihood
  Y = SURLAST - SUR
ENDIF
IF (DVID.EQ.2.AND.DV.EQ.3) THEN ; start interval
  SURLAST=SUR
ENDIF
IF (DVID.EQ.2.AND.DV.NE.3) THEN ; save recursive random variable
  SURLAST=SURLAST
ENDIF

```

©NHG Hofford 2021, all rights reserved.

This illustrates joint modelling for disease progress and an event. The event hazard depends on disease progress. A differential equation is used to integrate the hazard. An effect of treatment (TRT) is assumed to affect the intercept of the disease progress model which in turn influences the hazard of the event.

It is useful to be able to save the value of the cumulative hazard in order to calculate the likelihood of an interval censored event. In this example DV=0 is used to indicate the start of the interval censored event period and the cumulative hazard at this time is saved in the CHLAST variable.

The F\_FLAG variable is used to tell NONMEM how to use the predicted Y value. F\_FLAG of 0 is the default i.e. Y is the prediction of a continuous variable. F\_FLAG of 1 means the prediction is a likelihood. F\_FLAG of 2 means the prediction is  $-2*\ln(\text{Likelihood})$ .

Slide 6

## Time to Event Analysis Diagnostic Plots

©NHG Hofford 2021, all rights reserved.

Slide  
7

## Outline

- The Kaplan-Meier Plot
- Simulating time to event
- Visual predictive checks

©NHG Holland, 2021, all rights reserved.

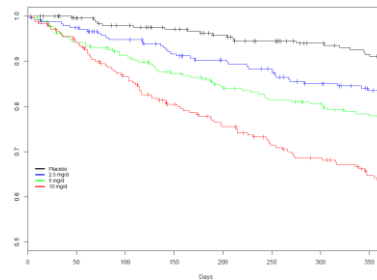
Slide  
8

## Kaplan-Meier Plot

- Derived directly from events
- Non-parametric estimate of survivor function
- Incorporates censored events

$$\hat{S}(t) = \prod_{j=1}^k \left( \frac{n_j - d_j}{n_j} \right)$$

$n_j$ =alive in interval,  $d_j$ =die in interval



©NHG Holland, 2021, all rights reserved.

Computation of KM estimates can be tricky e.g. how to handle tied events (more than one event at the same time). It is best done using a well written procedure in a statistical package. See Collett, D. (2003). [Modelling survival data in medical research](#). Boca Raton, CRC Press for details. The following example shows how to generate the KM plot shown above and how to add predictions of the survivor function to the KM plot.

Slide  
9

## R Code for Kaplan-Meier

```
library(survival)
# Read data file with event times
input= "warf_INR1"
warf=read.csv(paste(input, ".csv", sep=""), stringsAsFactors=F)
names(warf)[1]="ID" # Make a variable called ID

# Select columns to use
event = subset(warf, MDV==0,
               select=c("ID", "TIME", "DV", "TRT"))
event[, "DV"] = as.numeric(event[, "DV"])

# Run survfit() with TRT as the covariate
fit1 = survfit(Surv(TIME, DV)~TRT, data=event, conf.type="none")
```

©NHG Holland, 2021, all rights reserved.

Factors are a special kind of data type that can cause problems for R functions expecting numeric values. By default R will treat the DV column as a *factor* because a NONMEM formatted data file may contain "." for DV when MDV=1. The stringsAsFactors=F option is used in read.csv() but this means all values in the DV column will be converted to character data type. Then names() function is used to rename the first variable in the warf data frame from "\_ID" to "ID". By default it will have the name "\_ID" because the CSV file header for the first column may be "#ID" and R converts the "#" to "\_". After extraction of records with events (MDV=0) using the subset() function it is necessary to convert the character values of DV to numeric values for survfit() to work properly. The automatic conversion to factor is one of the 'features' of R that often requires the kind of workaround shown here. A DV value of 1 indicates this is an event. A DV value of 0 indicates a censored event (e.g. due to dropout).

		<p>survfit() computes the non-parametric Kaplan-Meier estimates of the survivor function. The formula for the survivor function includes "~TRT" which means TRT is a covariate distinguishing different groups so that a separate set of KM estimates is produced for each treatment.</p>
<p>Slide 10</p>	<h2 style="text-align: center;">R Code for T2E Plots</h2> <pre style="font-family: monospace;"> # Create plot using output from survfit()  minProb=0.5; maxTime=365 xscale = c(0,maxTime); yscale = c(minProb,1) kmcOLORS=c("black","blue","green","red")  kmplot=plot(fit1,             col=kmcOLORS, cex.main=.95,             ylim=yscale, xlim=xscale,             xlab="Days", ylab=paste("Prob of No Event ",input),             mark.time=TRUE # show censored events             ) legend(   legend = c("0 mg/d", "2.5 mg/d","5 mg/d","10 mg/d"),   lty=c(1,1,1,1),lwd=c(2,2,2,2), col=kmcOLORS, bty='n', cex=.8,   x=0.01*maxTime,y=minProb+(1-minProb)*0.35 ) </pre> <p style="font-size: small;">©NHG Holland 2021, all rights reserved.</p>	<p>The plot() function recognizes that fit1 is an object created by survfit() and knows how to extract the data in order to create a line for each survivor function and to mark censored events. The legend() function is used to add an informative legend to describe the different treatments associated with each survivor function curve.</p>
<p>Slide 11</p>	<h2 style="text-align: center;">Simulating Time to Event</h2> <ul style="list-style-type: none"> <li>➤ There is no simple solution to simulate an exact event time</li> <li>➤ A general solution for interval censored event times exists       <ul style="list-style-type: none"> <li>➤ Requires pre-specifying the intervals e.g. every day for 1 year</li> </ul> </li> <li>➤ Simulation in NONMEM is complex. The following code snippets show some of the key features.</li> </ul> <p style="font-size: small;">©NHG Holland 2021, all rights reserved.</p>	

Slide 12

## NONMEM Data Template for Simulation of Warfarin

#ID	TIME	TRT	AMT	RATE	ADDL	II	WT	DVID	DV	MDV
1	0	1	5	-2	364	1	70	0		1
1	0	1	.	.	.	.	70	1		1
1	0	1	.	.	.	.	70	2		1
1	0	1	.	.	.	.	70	3		1
1	1	1	.	.	.	.	70	1		1
1	1	1	.	.	.	.	70	2		1
1	1	1	.	.	.	.	70	3		1

©NHG Holboog 2021, all rights reserved.

Data template can be used to simulate warfarin PK (AMT, RATE, ADDL, II) and changes in prothrombin complex activity (PCA; DVID=1) and international normalised ratio (INR, DVID=2) as well as interval censored time to event (DVID=3). Between subject variability in warfarin PK can be simulated in part by simulating different weights.

Slide 13

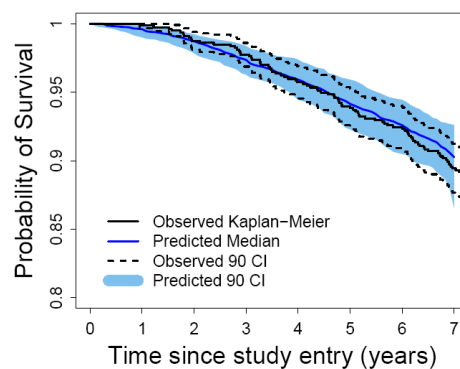
## Visual Predictive Check of Time to Event

- Simulate many data sets e.g. 100
- Calculate the KM survivor function estimates at each time for each data set
- Interpolate the KM survivor function at frequent intervals e.g. every day
- Calculate median and prediction intervals from the set of interpolated KM survivor functions

©NHG Holboog 2021, all rights reserved.

Slide 14

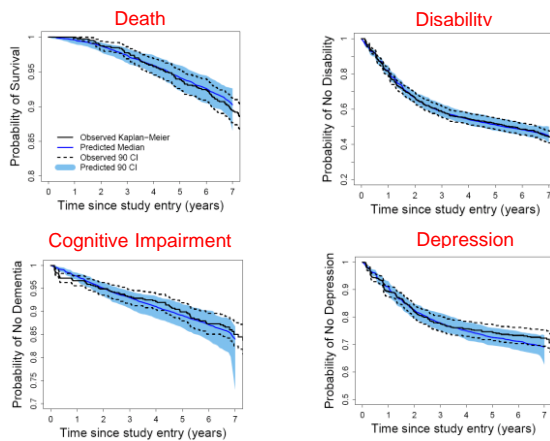
## Time to Event VPC



©NHG Holboog 2021, all rights reserved.

Slide 15

### Evaluation of Hazard Models visual predictive check



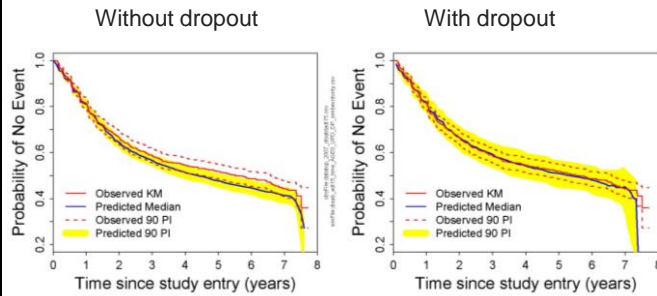
©NHG Holland, 2021, all rights reserved.

36

The change of disease status, reflected by the time course of UPDRS, is the most important factor determining the hazard of clinical outcome events in Parkinson's disease. The different shapes of the survival function for death, disability, cognitive impairment and depression reflect different contributions of disease status to the probability of not having had the event as time passes.

Slide 16

### Disability Event Final Model: $\text{time} + \text{age}_0 + \text{UPDRS}(t) + \text{deprenyl}(t)$



©NHG Holland, 2021, all rights reserved.

Time to event model for disability in Parkinson's disease (from Vu, T. C., J. G. Nutt, et al. (2009). "Disease progress and response to treatment as predictors of survival, disability, cognitive impairment, and depression in Parkinson's disease." In Preparation.)  
The VPC shows the need to include the dropout model (due to death or non-death random censoring) in order to match the disability time to event model predictions with the observed KM survivor function estimates.